

Strategically Strengthen & Enhance PACHE: Opportunities for Collaborations

Jill A. Macoska, PhD



Leadership Team



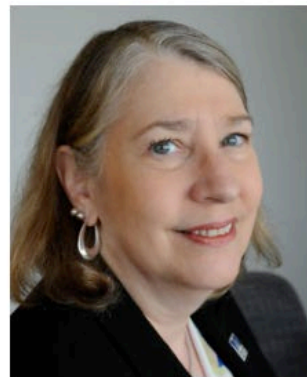
**Adán Colón-Carmona,
PhD**

Contact PI, Research
Education Core Lead
UMass Boston



Vish Viswanath, PhD

Contact PI, Outreach
Core Lead
DF/HCC



Jill Macoska, PhD

MPI, Genomics Core
Lead
UMass Boston



**Gregory Abel, MD,
MPH**

MPI, Research Design
and Analysis Core Lead
DF/HCC

<https://umb-dfhcc.org/>

PLANET MassCONNECT offers a step-by-step approach to find evidence-based programs that help you improve the health of the communities you serve.



- Offered and developed by the UMB/DF-HCC U54 Outreach Core with input from the Community Advisory Committee
- Provides a step-by-step approach to find evidence-based programs that help you improve the health of the communities you service

<https://planetmassconnect.org/>

PLANET MassCONNECT offers a step-by-step approach to find evidence-based programs that help you improve the health of the communities you serve.

1. Frame the issue: Find local, state, and national data that supports that a health problem is facing your community.
2. Find effective strategies: Find a suitable intervention.
3. Assess partnership opportunities: Find partners to work with you,
4. Choose and adapt an evidence-based program: Find a program and adapt it to your needs.
5. Plan the evaluation: Set up a plan for program assessment.
6. Prepare to implement: Create an action plan to deliver the intervention.

Also offers Training Sessions to help people work through the process.

PLANET MassCONNECT offers a step-by-step approach to find evidence-based programs that help you improve the health of the communities you serve.

"Planet MassCONNECT gives you the tools to identify successful evidence-based programs [and] get immediate access to important data... I utilize the website regularly to research evidence-based programs that might work in my community."



Rev. Albert Whitaker

NE Regional Director of Community
Health Strategies, American Diabetes
Association

Massachusetts Life Sciences Center (MLSC)

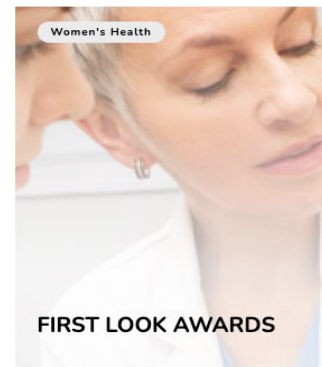
The Massachusetts Life Sciences Center's **mission** is to:

- Serve as the “hub” of the Massachusetts life sciences ecosystem,
- Encourage innovation through investments in good science and good business,
- Strengthen and protect Massachusetts' global leadership position in the life sciences,
- Accelerate the commercialization of promising treatments, therapies, and cures that will improve patient care,
- Create jobs and drive economic and STEM *workforce* development.

<https://www.masslifesciences.com/>

Massachusetts Life Sciences Center (MLSC)

open to both private and public Massachusetts colleges and universities





Lists state-sponsored funding opportunities for life-sciences relevant infrastructure and training (13 states + PR)

<https://www.bio.org/press-release/new-report-explores-latest-best-practices-state-bioscience-economic-development>

 U.S. DEPARTMENT OF LABOR

Employment and Training Administration

<https://www.dol.gov/agencies/eta/grants/apply/find-opportunities>

- Lists funding opportunities for workforce development
- Usually at state level
- **Collaborations between state offices and academics



Training and Infrastructure

MassBioEd

<https://www.massbioed.org/>

- Non-profit organization.
- “Our mission is to build a sustainable life sciences workforce in the region through educational programs that engage and excite teachers, inspire and propel students, and illuminate the pathway from the classroom to career with a focus on expansion, opportunity, and **diversity**.”
- *Build pipelines between academia and industry to prepare (STEM) students for employment in Life Science industries.*
- These efforts require STEM faculty to work with institutional career services to teach, inform, prepare, and connect students with Life Science industry Internships and Recruiters.

MassBioEd

- 2 Life Sciences Career Expos (22-23 AY).
- 250 students.
- UMB/DF-HCC REC participated.
- Takeda, Thermo Fisher, Addgene, Dewpoint, etc.

- 2023 MassBioEd Life Sciences Workforce Conference.
- Held at UMB.
- ~400 participants from academia, industry, government.



Boston Public Health Commission

- *Generational Health Scholarship*
- Partnership between UMB and the City of Boston to develop and administer a novel, need-based scholarship for Boston area first-year college students of color studying for careers in STEM, Health Sciences, Public Health, Behavioral Health.
- Students would be mentored and provided with financial support each year for 4 years to enhance students' ability to enter, matriculate, and graduate from a four-year collegiate degree program.
- Recent Supreme Court decision negated this opportunity.
- *We, as the PACHE community, need to discuss the ramifications of this decision and identify approaches that are not impeded by it.*

<https://www.boston.gov/>